



The Women of Achievement Luncheon
Supporting Scottish Charities

The Women of Achievement Luncheon

Tuesday 20 March 2012
The Caledonian Club



BROOMWOOD HALL

WANDSWORTH LONDON SW12



A touch of Scotland in London
www.broomwood.co.uk



The Women of Achievement Luncheon
Supporting Scottish Charities

Tuesday 20 March

Guest Speakers:

Celia Imrie

Actress, Star of stage and screen. The Happy Hooper, proud of her Scottish Ancestry, mostly happy, always dancing.

Victoria Stapleton

Founder and Creative Director, Brora

Ann Widdecombe

Former MP and Minister of State. Currently Broadcaster, Novelist and TV Personality

Theme:

The Art of Achievement

Chairman: Lady Colquhoun of Luss

Treasurer: Mrs Carol Mitchell

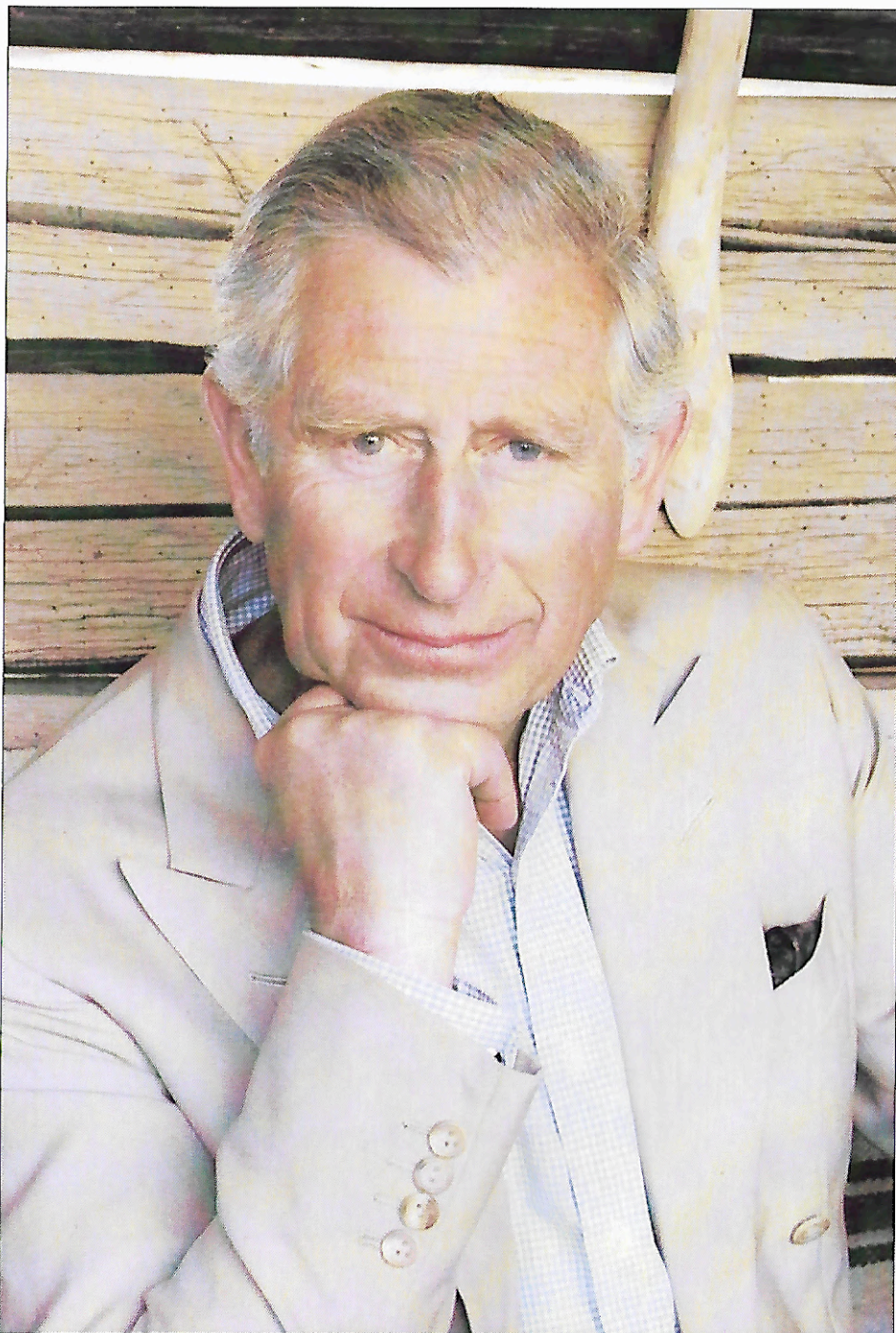
Committee:

Eleanor Argyll, Elisabeth Beccle, Deborah Bennett, Elaine Colville,
Elizabeth Crichton-Stuart, Venetia Fuller, Jill Marx, Judy McAlpine, Anne Mason Brown,
Susie Ross, Emily Stair, Valentine Walsh Child, Carolyn Warrender, Jennie Younger.

Sponsored by



Butterfield



HRH THE PRINCE CHARLES, DUKE OF ROTHESAY

I am delighted to welcome you to the fifth Women of Achievement Luncheon.

I understand that last year's Lunch was the most outstanding success, raising a huge amount in support of our precious, threatened Red Squirrels. Thanks to your wonderfully generous support, the future of one of our most charming native species is just a little bit more secure...

I was equally thrilled to learn that this year's beneficiary will be the nation's honey bees. For several years now, I have been particularly keen to find ways of helping to reverse the decline of bees. It is with alarming frequency that one hears of scientists discovering new diseases posing new threats to British bees. Coupled with the worrying trend of colony collapse, and the ever-mounting challenge of climate change, the future for our poor bees is bleak indeed – unless urgent and effective action is taken.

Bees are a vital link in the precious chain of life that sustains us. Without pollinating bees, we face the drastic loss of crop-lands, fruit orchards, flower-rich grasslands and meadows. This is far too great a risk to run.

Your generous assistance will support hives at The Castle of Mey, Invereray Castle, Pitmedden, Threave Castle and Dumfries House. These sites will not only establish five new bee colonies, they will doubtless also inspire some of the visitors to take up bee-keeping. There can be no greater legacy than encouraging others to follow where you lead. For that, and so much more, I really cannot thank you enough.

This comes with my special gratitude for your continued support and my warmest good wishes for an enjoyable and entertaining lunch.

Charles



The Women of Achievement Luncheon
Supporting Scottish Charities

This luncheon is by invitation only and is held to recognise and celebrate the achievements and contributions made in many varied fields by women in Great Britain who have Scottish connections

Contents

	Page		Page
Forward by HRH The Prince of Wales	2-3	Guest Speaker Celia Imrie	24
Message from the Chairman	5	Guest Speaker Victoria Stapleton	24-25
The Sponsor Butterfield Bank	6	Guest Speaker The Rt Hon Ann Widdecombe	25
The Bee Sanctuary Gardens	7	List of Guests	26-27
Bees, Bee Keeping SBKA, BBKA	10-12	WOA Committee	28-30
Raffles	20	Flower Power- RHS Wisley	32/33
Timings for Lunch	21	WOA - Past Appeals	41
Menu and Speakers	22-23	Index of Advertisers	43
		Women of Achievement Luncheon 2013	44

We would like to thank all the Ladies who generously sent donations for the Bee Sanctuaries



Welcome to the 2012 Scottish Women of Achievement Lunch

It is wonderful that so many of you have returned to support our Fifth lunch and I would also like to extend a warm welcome to those of you who join us today for the first time. I am well aware that each and every one of you spend much of your time juggling many things in your daily life and I couldn't be more delighted that you have taken a moment to be with us today. It is good to know that even in these uncertain times, we can enjoy a delicious lunch, meet up with old friends, hopefully make some new ones and have the bonus of listening to three fascinating and different speakers.

This year the proceeds of our lunch will be used to help Bees. Why bees you may ask? Well, over the past 50 years or so there has been a steady decline in bee populations in Britain. No-one is exactly sure why but they think it is due to the reduction of wild flowers in the countryside. Therefore, we intend to establish Bee Sanctuaries in five Scottish gardens that are open to the public for everyone to go and see. Your money will provide two beehives, a swarm of bees, as well as an extensive array of plants, which will provide the nectar and pollen so vital to the bee's survival. These will be delivered later on in the Spring and you will be able to follow their progress on the garden websites. We are particularly grateful to HRH The Prince of Wales for giving us his support again this year and backing our initiative.

We are also very grateful to our speakers Celia Imrie, Star of Stage and Screen, Ann Widdecombe, former MP and Minister of State, currently Novelist and TV celebrity and Victoria Stapleton, founder and Creative Director of Brora, for so willingly giving up their time to entertain us today. Thank you.

Finally, a big thank you to all of you for coming and making today possible. I hope to see you all again next year.

Kate Colquhoun of Luss
Chairman
WOA Lunch 2012



Butterfield

Butterfield Private Bank

Putting the private back into banking

Situated in the City of London, Butterfield provides high quality private banking and wealth management services to wealthy individuals and their families. Our philosophy is to retain all the traditional values of a relationship-driven private bank combined with modern and efficient services. For more information on any of Butterfield Private Bank's services please visit

www.uk.butterfieldgroup.com

	<p>PRIVATE BANKING AND WEALTH MANAGEMENT BY BUTTERFIELD</p>
	<p>Butterfield Private Bank 99 Gresham Street, London, EC2V 7NG Telephone 020 7775 6700 www.uk.butterfieldgroup.com</p> <p>  Butterfield </p> <p><small>Advised and regulated by the Financial Services Authority</small></p>



The Women of Achievement 2012 Appeal

The proceeds of the 2012 lunch will set up Bee Sanctuaries this spring at 5 Scottish Gardens open to the public. Dumfries House, Ayrshire; The Castle of Mey, Caithness, Inveraray Castle, Argyll; Pitmeddan Garden, Aberdeenshire and Threave Garden, Dumfries and Galloway.

Every penny we raise with your help at this lunch will allow us to supply these five gardens with Bee Hives, colonies of Honey Bees local to each garden to avoid any infection from outside the area and pollinating plants and shrubs will be supplied by Binny Plants East Lothian and Threave Garden Nursery. The pollinating plant list has been supplied by the RHC Wisley and the gardens will choose plants from this list to suit their particular space and sanctuary design.

Thanks also to the Phil McAnespie, President of the Scottish BKA, each garden will have the help and advice from a registered local bee keeper to guide them with their Bee Colonies. Some gardens are keen to take the plan further and produce their own honey from their bees. We hope to have the sanctuaries set up in May, in time for the Bees to start their wondrous work.



DUMFRIES HOUSE



Built by the Adam brothers between 1754 and 1759 for the 5th Earl of Dumfries, and with a unique collection of Chippendale furniture, the house has been described as an 18th century time-capsule since the principal rooms and their contents have remained virtually unchanged for 250 years. After an intensive programme of conservation and restoration the interiors can now be viewed in all their 18th century glory. Saved for the Nation by HRH, The Prince Charles, in 2007 the house and estate play a vital part in the regeneration of East Ayrshire by creating job and training opportunities and working in partnership with local, regional and national organisations. Since last year the multi-faceted project has focused on exciting developments on the 2000 acre estate. These include amongst others the restoration of an old sawmill into a centre for traditional skills; the restoration of the historic laundry house to provide artists' studios; the conservation of a 17th century dovecot and the 18th century Adam built bridge. One of the most far reaching projects underway is the restoration and development of the late 18th century walled garden which will see community allotments and teaching facilities being created alongside a landscaped formal garden. The walled garden will be the location of the generously donated bee sanctuary with the dual intention of allowing bees to prosper whilst ensuring public access.



INVERARAY CASTLE & GARDENS



Inveraray Castle is one of Scotland's most recognised castles and has been home to the Dukes of Argyll and the Clan Campbell since the 1700s. Built on the shores of Loch Fyne, the castle overlooks the sea loch with the magnificent hills of the West Highlands as an impressive backdrop.

The castle was commissioned by the second Duke in the early 1700s to celebrate the family's newly elevated position. Vanbrugh came up with the original design of a fairly simple idea of a four-square building around a courtyard and although Vanbrugh did not live to even start the project, his general idea was taken up and expanded by the Adams brothers and Roger Morris resulting in the fairytale castle that stands today.

The formal gardens, opened for the first time to the general public in 2010, were designed by the 3rd Duke in 1743. He changed the flow of the river to create cascades and canals to enhance the sound as well as the visual aspect of the river, added the 'watch tower' folly on the hill by the castle, as well as planting avenues and adding monuments and viewpoints.

The flower borders directly in front of the castle were designed in the shape of the St Andrew's Cross. These borders, outstanding in the spring, are now to be home to the bee-friendly plants, while the bee hives are to be placed in full view of the castle and formal gardens as a 21st century addition to the 3rd Duke's wish for points of interest in the garden.



THE CASTLE & GARDENS OF MEY

The Queen Mother's Home
in Caithness



The Castle of Mey was bought by The Queen Mother in 1952. She restored the castle and created the beautiful gardens that can be seen today. For almost half a century The Queen Mother spent many happy summers at Mey. A tour of the castle and gardens gives visitors a rare opportunity to enjoy her summer home and her gardens much as she left them after her last visit in October 2001. There is a visitor centre with a gift shop and a tearoom with wonderful views to Orkney and serving fresh local produce. In the old granary and paddock is an animal centre with rare breeds of sheep with their lambs, goats, hens, ducks, geese, piglets and a donkey.

The Castle & Gardens of Mey are open 1st May to 30th September but are closed 26th July to 9th August inclusive. Please go to www.castleofmey.org.uk for more information.



the National Trust
for Scotland
a place for everyone

PITMEDDEN GARDEN, ELLON, ABERDEENSHIRE



Owned by the National Trust for Scotland this famous historic walled garden was originally laid out in 1675 by Sir Alexander Seton and was recreated by the Trust in 1952. Original yew trees tower over elaborate parterres comprising 5 miles of boxwood hedges which during the summer months are filled with 30,000 colourful bedding plants, a sight not to be missed. Herbaceous borders, trained fruit trees, a herb garden, water features, museum of farming life and woodland walks all add to the visitor's enjoyment of this immaculately kept and much loved Aberdeenshire garden.

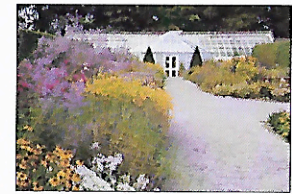
I started work at Pitmedden Garden in 1994 as a seasonal gardener and was taken on as a full-time gardener in 1996. In 1999 I was appointed to my current role of Property Manager/ Head Gardener.

Susan M. Burgess - Property Manager/ Head Gardener



the National Trust
for Scotland
a place for everyone

THREAVE ESTATE



Threave Estate is best known for its 64 acre garden, with its magnificent Springtime daffodil displays and all year round interest in its herbaceous perennials, rose beds, one acre walled garden with its temperate glasshouse collection, secret garden, sculpture garden and the many water features. For 52 years it has been the home of the National Trust for Scotland's School of Heritage Gardening which provides an in-depth practical gardening course for budding horticulturists.

Within the garden stands Threave House, a Scottish Baronial mansion built in red sandstone in 1872, by William Gordon, a successful Liverpool businessman who bought the Estate in 1867. It was left to the Trust in 1947 by William's youngest son, Alan, for the preservation of the wildfowl reserve. It is open to the public at set times during the season and is licensed for weddings, as are the gardens.

The wider estate is home to over-wintering wildfowl and over the last three years has seen the successful hatching of ospreys chicks on a site near to Threave Castle, previously a Douglas stronghold, now managed by Historic Scotland. Access to the Castle is by means of a boat.

In 2010 Threave Estate became Scotland's first bat reserve, with seven out of the nine species of bats roosting in and around the site. There are marked bat trails around the estate and bat detector boxes may be hired in the shop. Facilities include a restaurant and shop, with an exhibition area with displays by local artists.



Beekeeping in Scotland

This year the Scottish Beekeepers' Association are celebrating their Centenary at the Stirling Management Centre in Stirling on 15th and 16th September 2012. The Centenary convention will mark not only the Past, Present but Future of beekeeping in Scotland with lectures and displays relating to beekeeping.

Beekeeping in Scotland has been practised in different forms for many centuries and has like other countries seen many changes over this time. Over the last hundred years or so beekeepers have kept their bees in different forms of hives from straw skeps through to the modern day polystyrene hives.

The advent of moveable frames within the hives has seen a huge benefit to beekeepers. Now the bees can be checked for space, food, disease and of course lovely honey without having to resort to shaking the bees out of the hive completely as they did in olden days.

During this time, ecology has changed and whereas in years gone by sycamore, clover and heather were the main crops and blossom from the hedge rows was plentiful, now we have spring and summer sown oil seed rape, phacelia and other crops coming into play and many of the fields of clover and hedgerows have disappeared. This has had an impact in beekeeping and in many cases honey crops have dropped substantially and the days when a hive could yield over 50 kg of honey has all but gone.

This together with issues like the varroa mite and associated diseases means that beekeepers have to care for their bees in a far greater way and use various methods to ensure their wellbeing. Much has been written about colony losses in Britain and all over the world and this has brought about many problems for crop growers and pollination. However with the publicity that these issues have received, with research that is ongoing and with the concern of the public these losses are being addressed.

It is evident that the concern for our bee losses has reached the heart of the public and support groups alike. With their help in supporting beekeeping associations, planting bee friendly plants and becoming actively involved we will see a change in these present day problems.

Women of Achievement has shown such support with their present fundraising action and desire to see hives and bees placed in various areas around Scotland. The Scottish Beekeepers' Association is delighted to play a very small part in this function and would like to express their grateful appreciation for all that is being done by WOA to support honeybees and beekeeping in general at this time.

Phil McAnespie. President, Scottish Beekeepers' Association





Taking up beekeeping

Ever since the British Beekeepers Association members started kicking-up a rumpus over the plight of the honey bee and the lack of research going into solving the riddle of massive colony losses, beekeeping has been in the news. Honey bees not only produce delicious honey but are vital in food production as leading pollinators. The Association's membership has doubled in under three years, now almost 23,000 as new beekeepers take up the craft.

Beekeeping is not difficult; yes you will get stung, but if you learn the right way you'll enjoy it all the more, produce more honey and won't be a nuisance to your neighbours. That's important as more and more urban dwellers are getting involved. With proper management and siting of hives, bees can be kept in modest town gardens, where there is good forage thanks to lots of trees, shrubs and flowering plants in our gardens, parks and streets. Bees don't need or like a lot of interference. A nice dry site for the hive and regular monitoring to check that all is well will pay dividends in honey crop, which you can sell to friends or through local shops. The kit is easy to obtain but before laying out your cash join your local association and get trained – then get your hive and some bees. They cost a lot more these days due to demand, up to £150 for a starter colony or nucleus, but your association may get you a swarm to build up and that may be free. The club will also have kit to lend to extract the honey and bottle it. A little research before you begin is recommended; start-off by visiting the the BBKA web-site (www.bbka.org.uk) where you can find information on joining, training and links to suppliers.

Like all pastimes you need to invest time in learning how to do it; don't rush in, get a taste of it and if you find manipulating a hive too daunting you can always buddy-up and work alongside another beekeeper or simply do it from an armchair by supporting the BBKA through its Adopt a Beehive scheme. It's just like the puppy for Christmas adage; a beehive is not just for the summer honey – do it right!

BBKA



Susan Crawford

Susan Crawford was born in Scotland in 1941 and was brought up on a farm in East Lothian where her parents trained racehorses. She spent most of her earlier life either on or with a horse. She was educated in Scotland, England and Switzerland before studying classical drawing at Studio Simi in Florence from 1965 - 1967. During this period she frequently met Pietro Annigoni who said that he could not understand why she wanted to paint horses when she could have a fine career as a portrait painter.

Owing to a devastating flood in Florence her creative home diverted to Ireland where she went for two weeks and stayed for two years. Here she painted many horse portrait commissions and, although she taught herself to paint, the solid base of a classical drawing school and the strict discipline of observation was always to play its part. During this period she also went to the USA and painted horses for Paul Mellon and Jock Whitney.

As a portrait painter Susan Crawford has painted five members of the British royal family as well as the Sultans of Brunei and Oman. Her portrait of Queen Elizabeth The Queen Mother was exhibited at the National Portrait Gallery and the picture of jockey Lester Piggot on Park Top was included in the Treasures of Chatsworth Exhibition at the Royal Academy.

She had three one-artist shows at the Tryon Gallery, London in 1972, 1980 and 2001; all were complete sell-outs. In her 2001 show her versatility was shown not only in different mediums and techniques but in her general love of animals; living in Oman for some three years brought out her love of the camel.



KRISTINA CHARRINGTON

Tel: 01367 860557 Fax: 01367 860991 Mobile: 07774 193071
www.kristinacharrington.com e-mail: jewellery@kristinacharrington.com




THYME
 at **SOUTHPROP MANOR**

FOOD SCHOOL COTTAGES BUSINESS CELEBRATIONS

Thyme at Southrop Manor, Lechlade, Gloucestershire, GL7 3NX +44 (0)1367 850 174
 info@southropmanorestate.co.uk www.thymeatsouthropmanor.co.uk

BRORA

SCOTTISH CASHMERE

BEAUTIFUL CLOTHING

*New
Spring collection*

WWW.BRORA.CO.UK • 0845 659 9944

FLAGSHIP STORE SLOANE SQUARE • CHELSEA • MARYLEBONE • ISLINGTON

WIMBLEDON • RICHMOND • COVENT GARDEN • NOTTING HILL

CAMBRIDGE • BATH • OXFORD • GUILDFORD • HARROGATE • EDINBURGH



HUNTER

OUTSTANDING IN EVERY FIELD

Hunter is proud to support the 2012 Women of Achievement Luncheon

www.hunter-boot.com



Lyon & Turnbull is Scotland's oldest fine auction house, and the UK's largest firm of independent valuers outside London.

Our sales of paintings, antiques, jewellery and silver continue to attract the highest quality of goods, and our exceptional selling rate and high prices have maintained our position as Scotland's premier auctioneer.

Please contact us on 0845 882 2794 to find out how we can help identify, value, insure and sell your works of art.

LYON & TURNBULL
ESTABLISHED 1826

LONDON EDINBURGH GLASGOW

For sale details, viewing times and our fully illustrated catalogues please visit us at www.lyonandturnbull.com
78 Pall Mall London SW1Y 5ES | 0207 930 9115

WHEN IT COMES TO COMMISSIONING A PORTRAIT, INVEST IN THE BEST

For over fifteen years we have been the leading portrait agency in the UK, representing over forty artists, including established names and talented newcomers. By commissioning through us you gain the reassurance of our guidance throughout the process and the cost is no more than going direct to the artist's studio.

'... more important still, perhaps, is the utter independence that Fine Art Commissions enjoys, as much of interest as of judgement, in the advice they offer, with no Society rules to follow, or personal axes to grind. With some 40 artists of all kinds and approaches on the books, the choice is there to be made.'

William Packer

ART CRITIC
THE FINANCIAL TIMES, THE GUARDIAN, THE TIMES

'Finding the right portrait artist was a problem until we came across Fine Art Commissions, who solved it in an hour.'

Ken Follet

AUTHOR

Investing for generations

One UK's largest generalist investment trusts. Based in Scotland since 1888.

proud to support **Women of Achievement**



ALLIANCE TRUST INVESTMENTS

ALLIANCE TRUST PLC

ALLIANCE TRUST SAVINGS

www.alliancetrust.co.uk

Alliance Trust PLC is an investment company registered in Scotland No. SC1731.
Registered office, 8 West Marketgait, Dundee DD1 1QN.



Bee Sanctuaries in Scotland

The Table Raffle

We are very grateful to HRH The Duchess of Cornwall for her most generous gift of Highgrove Champagne, with two hand cut, lead crystal flutes featuring a design inspired by the tartan of The Duke of Rothesay.

We would like to thank,

Thyme Food School for 2 places on a full day's cookery class with a mid-week Overnight stay in the Dairy. (Subject to availability).
Kinloch Anderson for their beautiful silk tartan scarf and
Neston Park Farm Shop for the Hamper of delicious goodies.

Envelopes will be placed on each table and will be collected by a committee member during coffee before the speakers begin at 1.45pm. Please write your name on a bank note and place in the envelope. The draw will take place at the conclusion of the lunch.

Please give generously and help us set up the Bee Sanctuaries in these special gardens for everyone to see and enjoy.

John Chambers Wild Flower Seed specialists have put together special Bee Wildflower seed packets for WOA which you can buy to plant in your own garden or give to friends for their gardens.

There will also be the very special Bee cards and Post Cards by Artist Susan Crawford, a book on Bee Keeping by David Wootton, a children's book 'The Bee Man' and the RHS Pollinating Plants List. All these items will be available to buy after Lunch at the Exit door.

We are enormously grateful to Susan Crawford who at our request specially painted her first Honey Bee for WOA. This stunning original painting which we used on the invitation, this programme and the Bee cards is on display at the lunch. We would like to thank her for her exceptional support.

We would also like to thank;

Butterfield Private Bank for their continued support this year
Kristina Charrington for supplying for a second year the fabulous jewel for the postal raffle.
David Wootton for the wonderful Bee photographs throughout the programme. And most importantly to the **BBKA**, the **SBKA** and **RHS Wisley** for their enormous help, guidance and support.



The Women of Achievement Luncheon
Supporting Scottish Charities

Timings for Women of Achievement Luncheon

20 March 2012

11.30	Arrival Drinks
12.20	Lunch Announced
12.55	Chairman's Welcome
13.00	Lunch
13.45	Bee Appeal
13.50	1 st Speaker Celia Imrie
14.00	2 nd Speaker Victoria Stapleton
14.10	3 rd Speaker Ann Widdecombe

Raffle draw.

14.20	Farewell Thanks Anne Mason Brown
-------	----------------------------------

The Committee are most grateful to Revd. Elisabeth Morse and to Piper Jean Findlay for the excellent piping at the lunch today.
(leanfindlay9@aol.com)



The Women of Achievement Luncheon
Supporting Scottish Charities

MENU

Leek and Roquefort tart with cranberry compote

Fillet of sea bass with asparagus
and lime scented cream
accompanied by new potatoes

WINES

Fizz Prosecco --Di Coneglian
White Wine - Neblina Sauvignon Blanc
Red Wine - Neblina Merlot
Elderflower Cordial



The Women of Achievement Luncheon
Supporting Scottish Charities

SPEAKERS

Theme:

The Art of Achievement

Lady Colquhoun of Luss
Chairman

Celia Imrie
Actress, Star of stage and screen. The Happy Hooper, proud of her
Scottish Ancestry, mostly happy, always dancing.

Victoria Stapleton
Founder and Creative Director, Brora

The Rt Hon Ann Widdecombe
Former MP and Minister of State. Currently Broadcaster,
Novelist and TV Personality



Celia Imrie

Celia Imrie is perhaps best known for her regular characters in the award-winning TV series *Acorn Antiques*, *Dinnerladies*, and also in *Absolutely Fabulous*. Celia is due to star in *Noises Off* at the Old Vic Theatre, and has most recently been on stage in *Drama At Inish* at The Finborough, *Hay Fever* at the Rose Theatre, *Acorn Antiques – The Musical* directed by Trevor Nunn, and *Habeas Corpus* at the Donmar directed by Sam Mendes. Her many screen credits include *Calendar Girls*, *Hilary and Jackie*, *Nanny McPhee*, *Wah Wah*, Aunt Una Alconbury in the *Bridget Jones* films, and Matron in the two recent *St. Trinian's* films. She recently completed filming Julian Fellowes' *Titanic* series for the BBC, and will soon be seen on the big screen in *The Best Exotic Marigold Hotel*.

**Victoria Stapleton, Founder and
Creative Director, Brora**



Victoria Stapleton is the founding owner and creative director behind the luxury cashmere and fashion label Brora, which has become one of the most successful, almost exclusively British-made retail and mail order brands in the UK.

Brought up in an entrepreneurial family, Victoria was keen to run her own business after completing her studies in Interior Design and a degree in Art History. When in 1990 her family bought Hunters of Brora, a 100 year old tweed mill based on the east coast of Scotland, Victoria was put in charge of the Mill's retail venture in Brora village, selling Hunters of Brora tweed and a variety of clothing, all sourced from Scottish suppliers.

In 1993 Victoria left for London to start her own company with a 7,000 customer mailing list and permission to use the Brora name, selling the best of Scottish clothing using Hunters tweed and Scottish cashmere.

The Right Hon Ann Widdecombe



Ann was born in 1947 in Bath. Her father was the Head of Naval Supplies and Transport at the Ministry of Defence. She was educated at the Royal Naval School Singapore, La Sainte Union Convent Bath, Birmingham University (BA Hons Latin) and Oxford University (BA Hons Politics, Philosophy and Economics) LMH MA 1976.

Ann worked in marketing at Unilever from 1973 to 1975 and was Senior Administrator at London University from 1975 to 1987. From 1987 to 2010 she was the Member of Parliament for Maidstone. Over the years she held a number of posts including Minister of State Department of Employment 1994, Minister of State Home Office 1995 with responsibility for prisons and immigration, Shadow Health Secretary 1998 and Shadow Home Secretary 1999.

In 2000 Ann wrote the *Clematis Tree* which rose to number 8 in the Times Best Seller List and has written a number of novels since. She has a weekly newspaper column in the Daily Express. Ann has also presented numerous television and radio programmes, starring in the 2010 series of *Strictly Come Dancing*. She has a new quiz show called *Clever Dicks* on Sky and an established pantomime role with Craig Revel-Horwood.

Brora started life in a small studio in Fulham, but quickly grew and the King's Road shop was opened in 1995, with a mail order business in the basement. A warehouse followed the next year in Fulham with more shops quickly following in successive years to today's portfolio of 15 shops throughout the country. Due to its continuing success, the Company relocated its ever expanding Head Office to a large purpose built space in Stevenage in 2008 employing over 50 people.

For Victoria, "ethical" and "social responsibility" are the natural core values of the business since she started it 18 years ago. Because Brora is 100% privately owned, the business is not just about turnover and profit rather these are by-products of the way the business is run. Brora has always been passionate about "made in Britain" and supporting British manufacturing industry, the key element being all their cashmere clothing is made in Scotland.

A-Z LIST OF ATTENDEES

A
Amanda Allerton
The Duchess of Argyll
Iona Duchess of Argyll
Lady Armstrong of Ilminster
Bonwen, Lady Astor

B
Tracey Balch
Mrs Robert Barham
Mrs Margaret Barrie
Mrs Richard Beccle
Deborah Bennett
Mrs Alpa Bhakta
Gertie Boerboom
Dowager Lady Bolton
Mrs Adrian Bowden
Annabel Bowe
Mrs Brass
The Viscountess Bridgeman
Ms Belinda Brocklehurst
Miss Susan Burgess
Miss Victoria Burgess
Lady Louise Burrell
Amanda Burton

C
Mrs Peter Cadbury
Mrs Lynsey Carson
Mrs Chamberlayne-Macdonald
Mrs Cherrington
Mrs James Chilton
Vivien Clere Green
Lady Colquhoun of Luss
Lady Colman
Mrs Cooper Mitchell
Mrs Meriol Cotton
Susan Crawford
Elizabeth Crichton-Stuart
Lady Crichton-Stuart
Lady Cubitt

D
Lady Dalmeny
Lady Mary B Damerell
Caroline Dobbin
Elizabeth Dobbin
Mrs Morag Dobbin
The Marchioness of Downshire
Mrs Gilly Drummond
Virginia Duncanson

E
Lady Edmonstone
Margaret Eliott
Countess Ilona Esterhazy
The Lady Alexandra Etherington
Mrs Evans

F
Mrs Farmer
Mrs Moira Farthing
Miss Leslie Ferrar
Mrs Jean Findlay
Fiona Finlay
Mrs David Firman
Lady Karen Fisher
Mrs Margaret Flory
Sybilla Jane Flower
Mrs Anthony Foyle
Rebecca Fraser
Lady Fuller

G
Mrs Shane Gallwey
Mrs Goldston
Mrs Rosalie Golland
Mrs Alan Graham
Mrs Graham
Mrs Keith Grant-Peterkin
Mrs Prue Greig

H
Mrs Hamilton
Mrs Hamilton-Davies
Karen Harper-Gow
Lucinda Harris
Mrs James Harvey
Caryn Hibbert
Mrs Elizabeth Hoare
Mrs T Holderness-Roddam
Mrs Hooley
Mrs Humphreys
Mrs Jonathan Hunt
Dr Harriet Hunt-Grubbe

I
Mrs Jock Ingall
Mrs Jonathan Innes
Annie Irving

J
Mrs Carole Jenkinson

A-Z LIST OF ATTENDEES

K
HRH The Princess Michael of Kent
Madam Kincaid of Kincaid
Mrs Knatchbull-Hugesson
Mrs Carol Krug
Kristina Kyriacou

L
Mrs Jamie Landale
Countess of Lauderdale
Mrs Lazarus
Mary Leslie
Mrs Levin
Mrs Anita Longcroft

M
Mrs A Macdonald
Mrs Anne MacDougall
Mrs Charles Mackinnon
Miss Ishbel Macpherson
Lady Macpherson of Biallid
Roxane Marmion
Lady Martin
Mrs David Marx
Anne Mason Brown
The Viscountess Massereene and Ferrard
Mrs Anthony Mather
Clare Mathewson
The Hon Lady McAlpine
Mrs Hamish McCorquodale
Miss Polly McCowen
Isabel McMeekan
Mrs Carol Mitchell
Lady Morrow
Revd Elisabeth Morse

N
Mrs Nicholson

O
Mrs Claire Owen

P
Mrs Brian Phelps
Victoria Piaseki
Mrs S Pilkington
Lady Poole
Mrs Nicholas Potter
Lady Purves

R
The Hon Mrs Ramsay
Mrs Reid
The Lady Rollo
Lady Ross
Ms Nicola Ross-Farrow

S
Claire Saunders
Mrs Balloo Scholfield
Mrs Caroline Sibbald
Mrs Callum Sillars
Mrs Ian Southward
The Hon Mrs Stanley
Mrs Stapleton
Mrs Jane Steel
Sara Stewart
Isobel Countess of Strathmore
Ms Tatyana Stream

T
Alex Talbot
Mrs M Till
Mrs Alexander Trotter

V
Mrs SJ Van Eeghen
Mrs C Van Staubenzee

W
Mrs Waddell
Sandra Wagg
Mrs Walsh Child
Mrs Shan Warnock-Smith
Carolyn Warrender
Lady Whitbread
Mrs David Williams Ellis
Mrs Robin Willis
Mrs Lindsay Wilson
Mrs May Woods
Mrs Roderick Wordie
Mrs Philip Wright

Y
Viscountess Younger of Leckie



The Duchess of Argyll

Eleanor runs Inveraray Castle and Gardens in Argyll with her husband Torquhil. The Castle is open to the public from April to October and is one of the more popular tourist attractions in Scotland. She has just started the 'Best of the West Festival' at the Castle - a weekend of the West of Scotland's finest food, whisky, ale, music, crafts and children's entertainment. They have three children Archie 7, Rory 5 and Charlotte 3. Previously Eleanor worked for Charles Barker Public Relations and Weber Shandwick.



Mrs Richard Beccle

Elisabeth is married to Richard and has two children aged 12 and 9. She is a non-executive director of Pacific Horizon Investment Trust and Dunedin Income Growth Investment Trust. In 2008 she returned to the United Kingdom having lived in Hong Kong since 1992 where she worked for Schroders. She began her investment career in Edinburgh and was brought up in Stirlingshire.



Deborah Bennett

Deborah's Company specializes in Image development and the promotion of luxury brands, particularly forming links for those companies within the world of Arts. Deborah has been working for 6 years as a consultant commissioning editor for Prestel Publishing and published books include Gosling-classic design for contemporary interiors: The Ultimate Trophy by Philip Hook: Delicious Jewels by Tamsin Day-Lewis. She was a Board Member of Highgrove, whose profits benefit the Prince of Wales Charities Foundation. Current Board appointments include the New English Ballet Theatre, Friends advisory committee for the Hunterian Art Gallery, Communications, Stewardship and Events Committees for the Courtauld Institute and the Women of Achievement Luncheon in aid of Scottish Charities.



Lady Colquhoun of Luss — Chairwomen 2012

Kate was born in England but moved to Australia when her father's job took her family there. After gaining her teaching degree in Australia she returned to England founding Broomwood Hall School in 1984. In 1993, she and her husband Malcolm, expanded by opening a boys Prep School, Northcote Lodge. She is Chairman of Northwood Schools and a Director of Luss Estates. The Colquhouns have three children and divide their time between the schools in London and their home on Loch Lomond.



The Hon. Mrs Andrew Colville

Elaine is a partner in the top Scottish law firm Shepherd and Wedderburn LLP. Elaine is based in the City of London office and been instrumental in the growth of the Scottish firm's presence in the City. She has practised law in the City for many years specialising in property investment advice for pension funds, insurance companies and property companies. She also has many years' experience in property finance. Elaine is also a member of the Governing Council of the University of Kent, a Board member of a large London Housing Association and a Trustee of a large grant making Charitable Trust.



Elizabeth Crichton-Stuart

Elizabeth is Scottish by birth and grew up in the Isle of Man and was educated in Switzerland. Elizabeth travelled extensively and returned to the UK to set up her own business, The Barmy Badger Backpackers, which has been running successfully for the last 13 years. She is British and World record holder in skydiving and whilst participating in these records, raised a lot of money for various charities.



Lady Fuller

Educated in Scotland and Switzerland, home Ayrshire and Edinburgh. Worked for Malcolm Innes Gallery London. Married James in 2000 and has 2 boys Archie and Harry. Live in Wiltshire at Neston Park and have Cannich in Inverness-shire. Created Neston Park Farm Shop. Invented The Dream Tube and created Dusky Moon with business partner Amanda Allerton. Dusky Moon is now in 40 countries around the world. She is one of the global faces of Wedgwood, helping them develop a tea range. Started Neston Park Stud and now has 5 horses from the stud shortlisted for the 2012 Olympics.



Mrs David Marx

Jill was educated in Scotland and Switzerland and then worked in the Art world for 10 years including six years at Christies. She is now a director of two Private Investment Companies based in Dundee. She has been very involved with Riding for the Disabled, gardening at a C of E School in Fulham and Fairbridge, a Charity which helps young people and is about to become part of the Prince's Trust. She lives in London but has a property in South West Scotland.



The Hon. Lady McAlpine. Chairwoman 2010

Portrait painter, ex racing driver, interior designer, garden designer and restorer of old houses. Now running estate with animal sanctuary, railway and museum. Event organiser and fund raiser.



Anne Mason Brown. Chairwomen 2009

Originally from Edinburgh, Anne worked in the City in financial services and charity recruitment, selling her business interests in 2008. She has recently returned to live in Edinburgh.



Mrs Carol Mitchell

Carol established an Interior Design business in Ayrshire and latterly Wiltshire. Owned and ran a National Hunt Stud Farm until 1995, is a Steward/Chairman of the BHA. Past member of the BRC Queen Mother Memorial Fund Board and has been involved in fundraising for many charities over the years, now Trustee of World Horse Welfare. NTS London Office Executive since 2006 organising fundraising events in the south.

Lady Ross Chairwoman 2011

Susie was involved with the London Committee of the NTS for many years and lives opposite the NTS property Threave Estate in Dumfries and Galloway, married to a former Member of the Royal Household who is current Lord Lieutenant of Kirkcudbrightshire. Passionate about fields sports, very involved with local charities and advisor to a London based IT company.



The Countess of Stair

Emily lives in South West Scotland, and together with her husband Jamie manages Castle Kennedy Gardens, which consist of 75 acres of historic landscaped gardens famed for its Champion Trees and magnificent rhododendron and magnolia displays, and Lochinch Castle, which form part of Stair Estates. She is a Trustee of the Scottish Community Foundation, the Wigtown Book Festival, a Board Member of Destination Dumfries and Galloway and a Livery Member of the Fishmongers Guild. Previously Emily worked for Saatchi and Saatchi Advertising, the National Science Museum and was a co-founder of the Beacon Fellowship Charitable Trust



Valentine Walsh Child

Valentine Walsh Child was born in Germany and grew up in Switzerland. She is the daughter of a US Diplomat and has lived in London for the last 35 years restoring works of art as a paintings conservator and pigment researcher with Oxford University. She lived in the Scottish Borders for ten years before moving to the Welsh Borders.



Carolyn Warrender

Mrs Francis Hazeel - has built her career with her innovative approach to interior design and colour. The author of four home decoration books, she developed Laura Ashley's first Home Furnishings collections and launched the UK's first stencilling shop. More recently she has focused on Retail Consultancy and using skills learnt throughout her career, she is now very active in local politics. Carolyn is married with two children.



Viscountess Younger of Leckie

Jennie is Global Head of Client Marketing for Deutsche Bank's investment banking business, where she has been for six years. Prior to that Jennie was ten years with GlaxoSmithKline (GSK) where she was Head of Corporate Communications Community Partnerships and a member of the company's Executive Team. She received the 'European Woman of Achievement Award for Business' in 2004. Before joining GSK, Jennie was Head of Investor Relations at British Gas playing a key role in the company's successful demerger. This followed 10 years in the City as an Equity Research Analyst with Barclays de Zoete Wedd and Kleinwort Benson. Jennie is married to Viscount Younger of Leckie who is a party whip in the House of Lords. They have three children. Jennie was educated at Gordonstoun and served on its board for 10 years. Her father's family comes from Fife and her husband's family home is in Stirlingshire. She is involved with several charitable organisations supporting medical research and the arts.



Wild flower borders at Wisley

Flower Power help for pollinating insects

Over the last 50 years declines in abundance have been noted in many groups of British insects, including bees and other pollinating insects. The reasons for this are various and complex but part of the problem may be the reduction in the abundance of wild flowers in the countryside that has occurred over this period. Gardens are increasingly being recognised as an important habitat where insects can find sources of nectar and pollen.

Flowers attract insects by providing them with two rich sources of food - nectar and pollen. Nectar contains sugars and provides insects with an energy source, while pollen grains contain proteins and oils. For some insects, such as bees, pollen and nectar provide the complete diet for both the adult insects and their larvae. Other insects, such as various flies and midges, beetles, wasps, thrips, bugs, butterflies and moths, visit flowers to feed on pollen and/or nectar but may also have other dietary requirements, especially in their immature stages. All are capable of picking up pollen on their bodies and bringing about pollination when they move to other flowers of the same plant.

Pollination is the process by which pollen is transferred from one flower to another, allowing the flower to become fertilised and able to produce seeds and fruits. In some plants, such as grasses and conifers, pollen is spread by the wind, but the majority of plants require insects and sometimes other animals to carry the pollen. It has been estimated that the value of insect-pollinated fruits and vegetables grown in the UK is about £220 million a year. In addition there is the inestimable value of pollination provided to wild flowers and garden ornamentals, making insect pollinators a vital component of our biodiversity.



RHS/Rebecca Ross

What can you do to give your garden flower power?

- Grow garden plants with flowers that attract pollinating insects http://www.rhs.org.uk/Gardening/Sustainablegardening/pdfs/RHS_Pollinators_PlantList_V1
- Look for plants at garden centres that have the RHS. Perfect for Pollinators logo
- Aim to have plants that are attractive to pollinating insects in flower from early spring to late autumn.
- Avoid plants with double or multi-petaled flowers. Such flowers may lack nectar and pollen, or insects may have difficulty in gaining access.
- Never use pesticides on plants when they are in flower
- Where appropriate, British wild flowers can be an attractive addition to planting schemes
- Encourage bees by keeping honeybees yourself or allowing a beekeeper to place hives in your garden. Nest boxes made of cardboard tubes, hollow plant stems or holes drilled in blocks of wood will provide nest sites for some species of solitary bees. Such nests are available from garden centres or you can make your own (holes/tubes should be in a mixture of sizes with a diameter of 2-8mm)

Some pollinator insect facts

- Britain has 25 species of bumblebees, of which about 11 commonly visit garden flowers
- A honeybee hive can contain up to about 60,000 bees in mid summer and they can convert the nectar they collect into over 100 pounds of honey
- There are about 260 species of solitary bee in Britain
- Unlike humans, honeybees can see ultraviolet light and can detect patterns on petals invisible to us. The markings on the petals guide bees to the nectar-producing parts of the flower and bring the insect into close contact with the pollen-bearing structures.
- When foraging honeybees have located a good source of nectar or pollen, they can recruit other bees to visit the same flowers. A figure of eight dance performed on the combs in the hive tells other bees how far and in which direction they need to fly to find the flowers

Compiled by Andrew Halstead
Principal Scientist Entomology
RHS Garden, Wisley



HAMILTON

FINANCIAL

Perhaps you like having your UK tax return prepared by a firm employing over 169,000 people around the world, spread amongst 771 cities and 158 countries, including offices as far afield as *Fukuoka* and *Shenzhen*?

On the other hand, perhaps you don't.

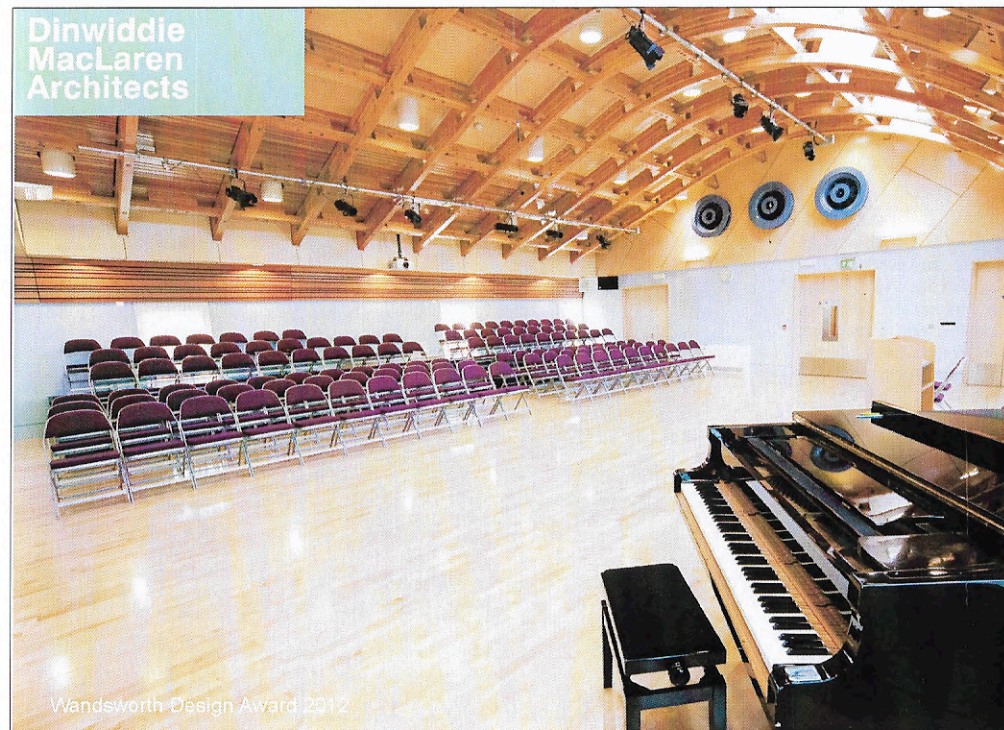
Andrew Hamilton & Co,
Chartered Accountants,
38 Dean Park Mews,
Edinburgh, EH4 1ED

offers you genuine professional advice
 at probably half the price.

Andrew Hamilton & Co
 Chartered Accountants &
 Tax Advisors
 0131 315 2469
www.andrew-hamilton.co.uk

Hamilton Financial
 Investment Managers &
 Financial Planners
 0131 315 2469
www.hamilton-financial.co.uk

Dinwiddie
 MacLaren
 Architects

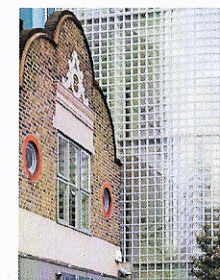


Wandsworth Design Award 2012

Even the most pragmatic design has the power to nurture the spirit.

Dinwiddie MacLaren Architects has a forward thinking and open minded approach to design. With experience across a diverse range of buildings, including offices, schools, industrial, residential developments and private houses, we offer a broad range of architectural & interior design services.

Offices
 Schools
 Residential
 Interiors



Dinwiddie MacLaren Architects
 Arthur's Mission, 30 Snowfields
 London, United Kingdom, SE1 3SU
 t: +44 (0)20 7403 6600
 e: info@dinmac.co.uk
www.dinmac.co.uk

SIMON SMITH AND MICHAEL BROOKE ARCHITECTS

Based in London for 25 years the practice has carried out a wide range of projects both in London and throughout the British Isles. Many of these concern listed buildings, particularly houses in London and the country, guiding clients through listed building consents and working sympathetically with the fabric to give a well designed and practical solution both for the present and the future.



NO 3 SCOUT LANE LONDON SW4 0LA
T: 020 7627 7630 F: 020 7627 7631 E: post@smithbrooke.co.uk

Other works include a number of new houses, flats, offices, libraries, hotels and schools all in the private sector, with an emphasis on green solutions.

A particular expertise is in dealing successfully with the contradictions that make up planning legislation across the country be it in England, Wales or Scotland.



Putting you on
the right path
to becoming a
successful cook.

EDINBURGH NEW TOWN
COOKERY
SCHOOL

From one day workshops to inspire your cookery passion, to a six month diploma course to set you up as a professional chef, we have something for you.

Courses include:

- One Week "Getting Ready for University" Course
- One Month Basic Course (tailored to gap year/ski season)
- Three and six month professional cooking courses.

7 Queen Street
Edinburgh
EH2 1JE

For booking and information please visit www.entcs.co.uk
email: info@entcs.co.uk or call 0131 226 4314

FOR ALL YOUR BUILDING NEEDS

Long established local Family Business offering a complete range of building, refurbishment and roofing services in south London.

☎ 020 8675 1343

✉ info@tmryan.co.uk



**M RYAN
& SONS**

Arbor Landscapes

Browse our site

Home
Who We Are

What We Do

Clean-Ups
Fencing
Watering Systems
Turfing
Tree Surgery
Decking
Garden Makeovers
Hedge Cutting
Paving
All Other Garden Aspects

Who We Are

Arbor Landscapes was started in 1989 to provide horticultural services to Businesses and Private Individuals. Aiming to provide a personal service from John van der Molen, a formally qualified Dutch Horticulturist and his team of assistants.



*"At home
with security"*

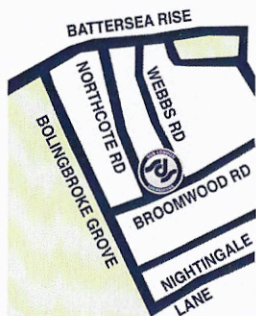


SDS LOCKSMITHS
183-189 Northcote Rd SW11 6QF
Tel: 020 7228 1185
www.sdslondon.co.uk

Celebrating 30 years of locksmithing



**Locks
Safes
Grilles
Key
Cutting**



*Now in our
22nd year!!*

TRIO

SYSTEMS

**Leading provider of print and copy machines,
space planning, office furniture and refurbishment**



14 HAMPTON ROAD TWICKENHAM MIDDLESEX TW2 5QB

TEL: 020 8893 4455 FAX: 020 8893 4456





Barmy Badger Backpackers
 17 Longridge Road
 Earls Court
 London
 SW5 9SB
 Tel: 0207 370 5213
 barmybadger@hotmail.com

*Let me tell you about a place
 Not far from Earls Court
 Station
 A meeting point, a funky joint
 For many a different nation.*

*See Liz and Ken stand at the
 door
 With a warm and friendly
 welcome
 And once they've booked those
 poor sods in
 Then only God can help them.*

*Your first night may be scary
 As you try to settle down
 But look around, you'll find
 your ground
 Coz everyone's a clown.*

*They're all the same, they play
 the game
 I'm sure you'll soon discover
 So don't complain when it gets
 insane
 Just run and dive for cover.*

*I've been there when it's quiet
 And many times when it's
 loud*

*I've been there Sunday
 mornings
 When some folk are not so
 proud
 And many good times you'll
 have believe
 When drinking you'll be off it
 Enjoy your stay, both night
 and day
 And your mind is sure to
 profit.*

*I've seen some come and seen
 some go
 And some have stayed for ages
 I've witnessed mayhem at first
 hand
 Through many stages
 Of in the ins and outs, the pros
 and cons
 The good times and the bad
 And all the time there's Liz
 and Ken
 Your surrogate Mum and Dad.*

Please visit our website
www.barmybadger.com for
 our prices, facilities and
 how to make a booking.



The Women of Achievement Luncheon
 Supporting Scottish Charities



Past Chairmen of the Women of Achievement Luncheon.

2008	Lady Edmonstone
2009	Anne Mason Brown
2010	The Rt Hon Lady McAlpine
2011	Lady Ross
Chairman	
2013	Mrs Elisabeth Beccle.

Past Appeals

2010 — NTS Puffin Appeal on Mingulay:

Adam Cross's Puffin Studentship continues apace. This will be his second field season on Mingulay. The Bothy refurbishment will go ahead this summer 2012 and a programme of image-recognition work counting puffins is planned for the future.

2011 — NTS Red Squirrels.

Conservation work continues to preserve the Red Squirrel in Scotland and on the NTS properties. It is an ongoing battle to stop the spread of disease and to maintain the habitat that red squirrels need to thrive and survive. In certain areas the colonies of red squirrels are increasing which is very encouraging and makes all the work so much more worthwhile knowing that we can make a difference.

We are very grateful to **Binny Plants** and **Threave Nursery** for supplying the plants for the Sanctuaries.

Binny Plants

Established 15 years ago by Billy Carruthers, we specialise in herbaceous perennials for Scottish gardens. We have a national reputation for our Peonies and will be exhibiting at Chelsea for the first time this year. We have an extensive range of Grasses, Ferns and Iris as well as other plants difficult to find in the uk.

We publish an annual catalogue (£2.50 in stamps) or have an easy to use secure website www.binnyplants.com for ordering and viewing what we offer. We send plants out from October to April in the UK and all other EU countries.

Nursery opening: 7 days. 10.00h to 17.00h

Web: www.binnyplants.com e-mail: contact@binnyplants.com

tel: 01506 858931

real mail: Binny Plants, Ecclesmachan, W Lothian EH52 6NL



Threave Nursery.

Suppliers of plants and Shrubs for the Bee Sanctuaries

Please contact 01556 502575

John Chambers' Wild Flower Seeds

15, Westleigh Road, Barton Seagrove, Kettering, Northamptonshire NN15 5AJ

Telephone: WELLINGBOROUGH (01933) 652562

Fax: (01933) 652576

SEED SPECIALIST

for Wild Flowers, Grasses, Herbs, Edible Plants, Ornamental Grasses and Everlasting Flowers



The Women of Achievement Luncheon
Supporting Scottish Charities

We are extremely grateful to Butterfield Bank for their valued sponsorship once again this year.

To HRH The Prince of Wales for his Charming and supportive Foreward
HRH The Duchess of Cornwall, Thyme at Southrop Manor, Kinloch Anderson
and Neston Park Farm - for their most generous raffle prizes
And all the following businesses who have taken advertising in this programme.

We would like to thank them all very much indeed for their valued support.

Index of Advertisers

	Page		Page
Broomwoodhall School	I/F Cover	Barbour	I/BCover
Kristina Charrington	13	S&B Architects	36
Thyme Food School	14	T.M.Ryan & Sons	36
Brora	15	Edinburgh Cookery School	37
Hunter	16	Arbor Landscapes	37
Lyon and Turnbull	17	SDS Locksmiths	38
Fine Art Commissions	18	Trio	39
Alliance Trust PLC	19	Barmy Backpackers	40
Andrew Hamilton	34	Binny Plants	42
Dinwoodie MacLaren Architects	35	Threave Nursery	42
		John Chambers Wildflower Seeds	42

Bee Sanctuaries in Scotland



We really do need your help to conserve our Bees for the future. Imagine a garden or the countryside without a **Buzzzzzz!!**



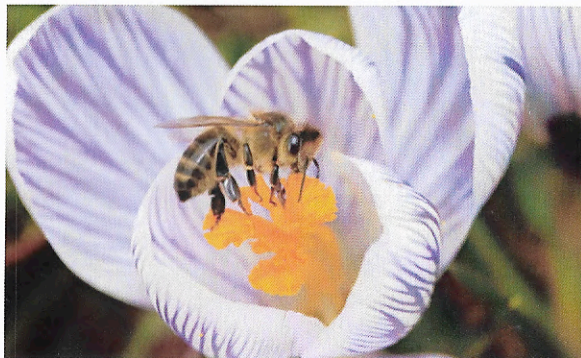
The Women of Achievement Luncheon
Supporting Scottish Charities

Luncheon 2013 - Tuesday 19th March
Supporting The Prince's Scottish Youth Business Trust

Please Note that we will not be sending out a 'Save the Date' post card in 2013.
All guests will be e-mailed a reminder in November.
If you would like further details of our Luncheon next year please contact:

Carol Mitchell - 2 Bridge Cottages, Water End, Ashdon,
Saffron Walden, Essex CB10 2NA
Telephone: 01799 584167 for further information or
Email: caminteriors@yahoo.co.uk

On behalf of the Women of Achievement Committee we would like
to thank all our guests for supporting us this year.



Cover Image from an original painting by Susan Crawford.
We are very grateful to David Wootton-www.beekeeping-book.com
and to all contributors of the Photographs throughout the programme



Barbour
www.barbour.com

