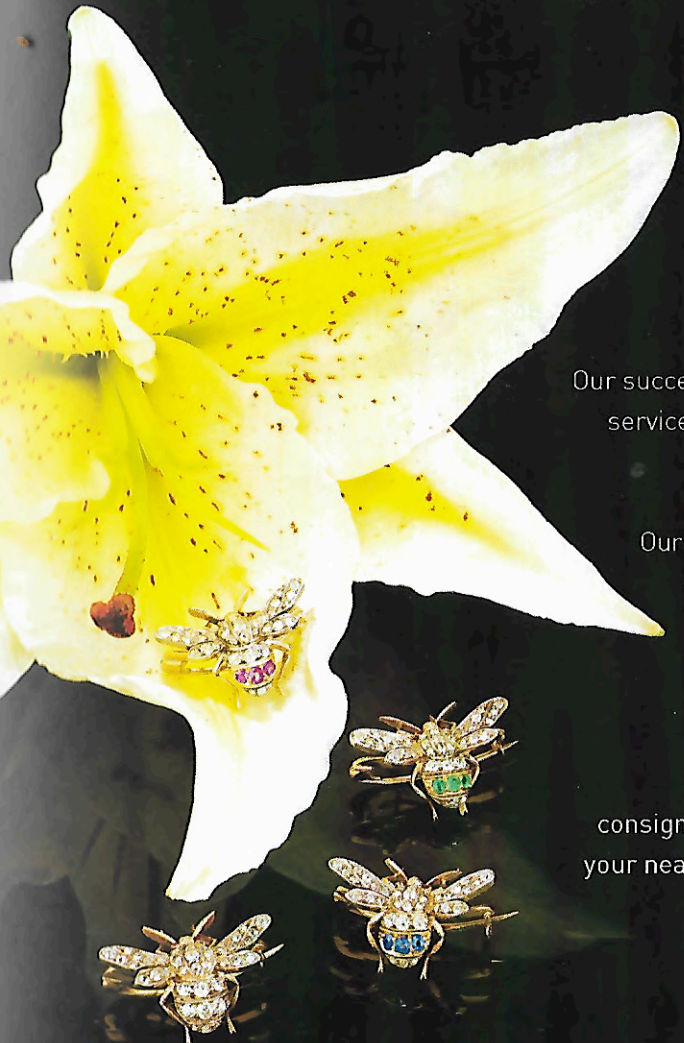




LYON & TURNBULL
ESTABLISHED 1826



Lyon & Turnbull is
the fastest growing
fine art auction house
in the UK.

Our success is built on personal
service, innovative marketing
and attention to detail

Our network of offices and
specialists throughout
the UK ensures a
prompt response to
your enquiries.

For all valuations and
consignments, please contact
your nearest branch to find out
how we can help you.

33 Broughton Place
Edinburgh EH1 3RR
Tel 0131 557 8844

11-12 Pall Mall
London SW1Y 5LU
Tel 020 7930 9115

182 Bath Street
Glasgow G2 4HG
Tel 0141 333 1992

Valuations
Department
Tel 0845 882 2794

www.lyonandturnbull.com



the National Trust
for Scotland
a place for everyone

The Women of Achievement Luncheon 2010

Tuesday 27 April

The Caledonian Club
9 Halkin Street
London SW1X 7DR

Investing for generations

Founded in 1888

UK's largest generalist investment trust

Investing globally

Alliance Trust is proud to support
Women of Achievement

Tel 01382 321000

www.alliancetrust.co.uk



the National Trust
for Scotland
a place for everyone

Women of Achievement Luncheon 2010

Tuesday 27 April

Guest Speakers:

Dame Stephanie Shirley

National Ambassador for Philanthropy

Katherine Garrett-Cox

Chief Executive, Alliance Trust PLC

Ruby Wax

Leadership Facilitator, Executive Coach

Theme:

The Art of Achievement

Chairman - The Hon. Lady McAlpine

Treasurer - Mrs Carol Mitchell

Committee:

Deborah Bennett, Elaine Colville, Anne Mason Brown,
Venetia Fuller, Katherine Garrett-Cox, Flora Harvey,
Carol Mitchell, Susie Ross, Emily Stair,
Elizabeth Crichton Stuart, Carolyn Warrender



the National Trust for Scotland

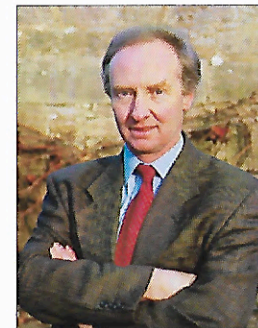
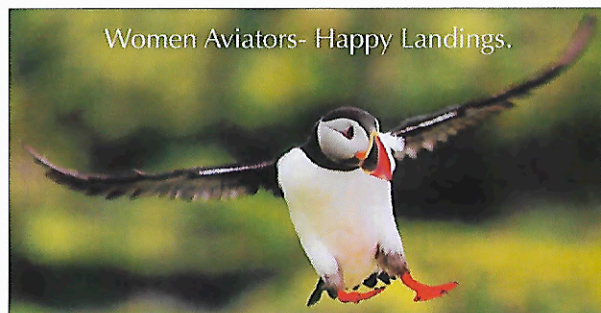
a place for everyone

Women of Achievement Luncheon

This luncheon is by invitation only and is held to recognise and celebrate the achievements and contributions made in many varied fields by women in Great Britain who have Scottish connections.

Contents

| | Page | | Page |
|--|------|--|-------------------|
| Forward from The Duke of Buccleuch and Queensberry KBE FRSE DL | 5 | Guest Speaker Dame Stephanie Shirley | 18 |
| Piper - Jean Findlay | 6 | Guest Speaker Katherine Garrett-Cox | 18/19 |
| Message from the Chairman | 7 | Guest Speaker Ruby Wax | 19 |
| Puffins Appeal - Susan Bain | 8/9 | List of Guests A—K | 20 |
| Dr Richard Luxmoore | 13 | List of Guests L—Z | 21 |
| Raffle, Silent Auction | 14 | Kate Mavor Chief Executive National Trust for Scotland | 22/23 |
| Timings for luncheon | 15 | Index of Advertisers | 28 |
| Menu | 16 | Events page | inside back cover |
| Speakers | 17 | | |



As President of the National Trust for Scotland, I extend very warm thanks indeed to all those who have come together in support of the third Women of Achievement Luncheon. That this splendid gathering is now a regular part of the calendar reflects the immense devotion of time and energy from a small band, mainly of volunteers, to whom I pay particular tribute as well as to the generosity of all who have taken tickets.

The Trust, with its huge responsibility for Scotland's built and natural heritage, gets very little help from Government. It depends heavily on the goodwill and deep pockets of its members and supporters. Projects like the one you are supporting today can only happen because of that.

Last year I was fortunate enough to land on Mingulay on a still summer's day and to see at close-hand those magical little puffins by their nests on the cliff-faces or wheeling in flocks to the sea below. It was deceptively beautiful for the threat that faces them after several poor breeding seasons is deeply worrying.

Your support will enable our researchers to try and find some explanation for what is happening there and with other colonies and then to take what steps we can to restore them to health. I hope that what promises to be a very happy and entertaining lunch, will be all the more enjoyable for knowing what important work you are supporting.

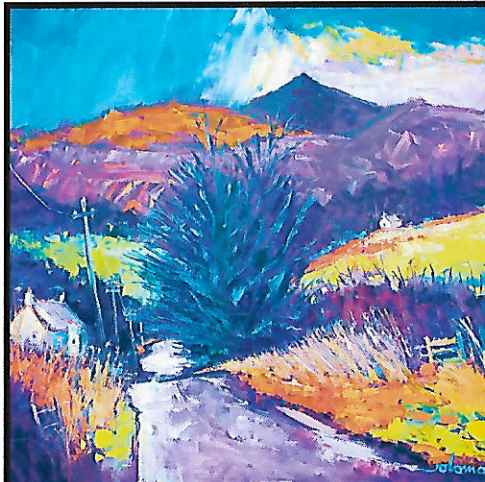
Thank you.

The Duke of Buccleuch and Queensberry KBE FRSE DL
President



'Committee Meeting - Women of Achievement Luncheon'

The Committee are most grateful to Piper - Jean Findlay
for the excellent piping at the lunch today
(jeanfindlay9@aol.com)



Jolomo

9th Annual London Exhibition A Hebridean Light

The Air Gallery
32 Dover Street, London W1S 4NE
(nearest tube: Green Park)

Monday 17 - Saturday 22 May
Daily 10am-6pm
Saturday 10am-4pm

presented by:-

corrymella@corrymellascottgallery.co.uk t 0776 3789112
amanda@caledoniart.com t 07718516954

VIEW EXHIBITION

www.corrymellascottgallery.co.uk www.caledoniart.com



Welcome to the 2010 Women of Achievement Lunch

Perhaps I should say "Welcome Back" as the guest list suggests that most of you are joining us for the third time. I hope this means that our small, hard-working committee has created an event you will continue to put in your diaries for years to come.

Our original aim was to bring together successful women with Scottish connections who would enjoy making new contacts while raising funds for the National Trust for Scotland. I think perhaps the Scottish connection is now less obvious but the calibre of both speakers and guests is as exciting in our third year as it was in our first. We have a room full of very successful ladies being addressed by three phenomenally successful speakers.

The alacrity with which Katherine Garret-Cox, Dame Stephanie Shirley and Ruby Wax agreed to attend today's lunch belies the fact that they are all extremely busy people for whose generosity of spirit the Committee is immeasurably grateful. I'm sure we will all learn a great deal in a relatively short time.

Thank you all for your support and for the money today's event will provide to help to protect the puffins on St Kilda and Mingulay. The fact that this is a National Trust for Scotland project illustrates the breadth of conservation work for which the trust is responsible and for which it is constantly trying to raise funds.

We keep the ticket price for this lunch as low as we can and do hope that this will encourage you all to contribute generously to the raffle. Have a wonderful lunch, a very good year and the Committee looks forward to seeing you again next year.

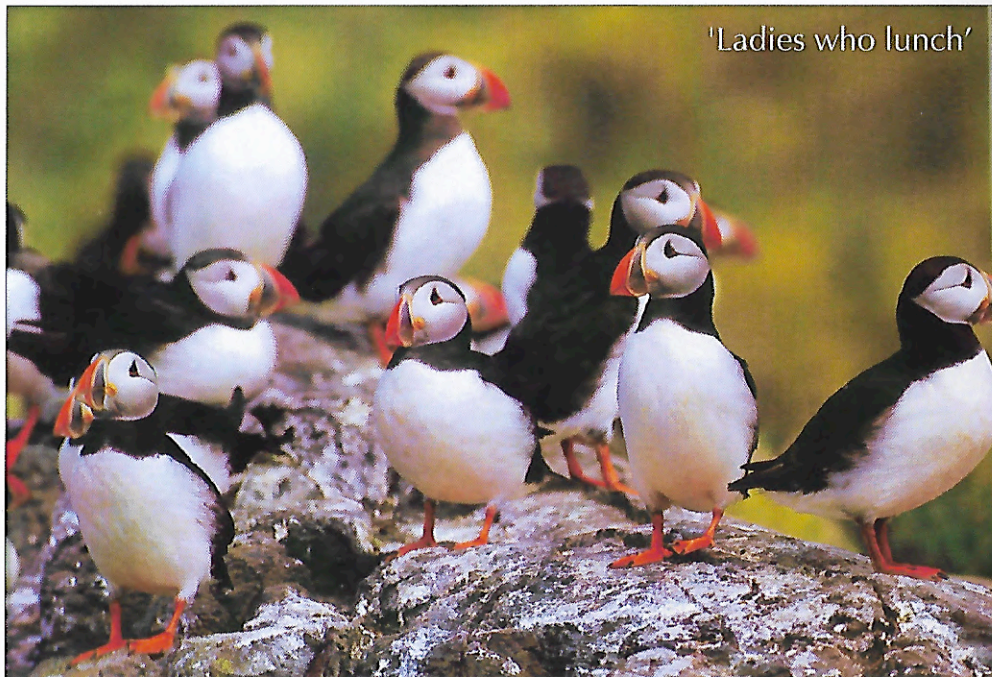
Judy McAlpine

When I asked Ruby, she said "Yes; just don't ask me to talk about plants." I forgot to mention Puffins.



Susan Bain
Western Isles Manager

After graduating in archaeology from Glasgow University Susan spent several years as a freelance archaeologist before joining the Trust on the Mar Lodge Estate in the Cairngorms in 1998. After 3 years of developing and implementing an archaeological monitoring and management programme there she accepts the post of archaeologist on St Kilda. After 4 years, during which she was closely involved in the successful bid for cultural World Heritage status, she became the manager of the Western Isles properties and has overall responsibility for the dual World Heritage site of St Kilda as well as Mingulay, Pabbay and Berneray south of Barra and a ruined blackhouse in Calanais, Lewis.



Mingulay Puffins

A trip to Mingulay in the summer months is an unforgettable experience. Lying south of Barra in the Outer Hebrides, it takes about an hour in a small boat to reach the uninhabited island. After scrabbling ashore and lugging any equipment or backpacks up the rocks it's good to sit down and take in the surroundings. The abandoned village is now returning to nature and the houses that once saw a thriving community are slowly being covered with sand. The white sand of the beach gives way to the turquoise and blue waters of the Atlantic, which may look like a tropical scene but a quick dip soon tells you otherwise. It is the rich seas surrounding these islands that are the key to the abundant wildlife, not only the large colony of grey seals that breed there in the winter but also the vast numbers of seabirds. Sitting quietly in the Bay you will soon become aware you are in puffin territory, the whirr of their fast beating wings as they wheel above your head or the low comforting moaning call and clatter of beaks as they greet each other. The adult birds return to land in April and will excavate a nesting burrow using their large beak and feet, sometimes they will occupy a rabbit burrow. Puffins lay a single egg and both parents share the feeding duties. Puffins feed their chicks small fish, like sandeels or capelin. In the past few years breeding success has been poor at several UK puffin sites. In 2005, 2007 and 2008 when researchers on St Kilda went into the puffin colony to weigh and measure the chicks they found the distressing sight of hundreds of dead chicks in the burrows and those that were alive were very underweight. A study of what fish the adults were bringing back to feed their young, showed very few sandeels, which are small, digestible and highly nutritious. We do not fully understand all the factors involved which influence the fish available; sea temperature, fishing practices, climate change are all possible factors. This is why it is vitally important to recover more data from a puffin colony on the west coast of Scotland, the information our researchers can gather will input into national and international studies and help us understand the complex relationships of puffins, fish and sea.

I cannot imagine visiting Mingulay and not watching the adult puffins whirr past with their beaks full of silvery fish, nor waiting with baited breath as a puffin edges closer to investigate my bootlaces. By supporting this project we will understand in detail what is happening to the puffins and safeguard their future.



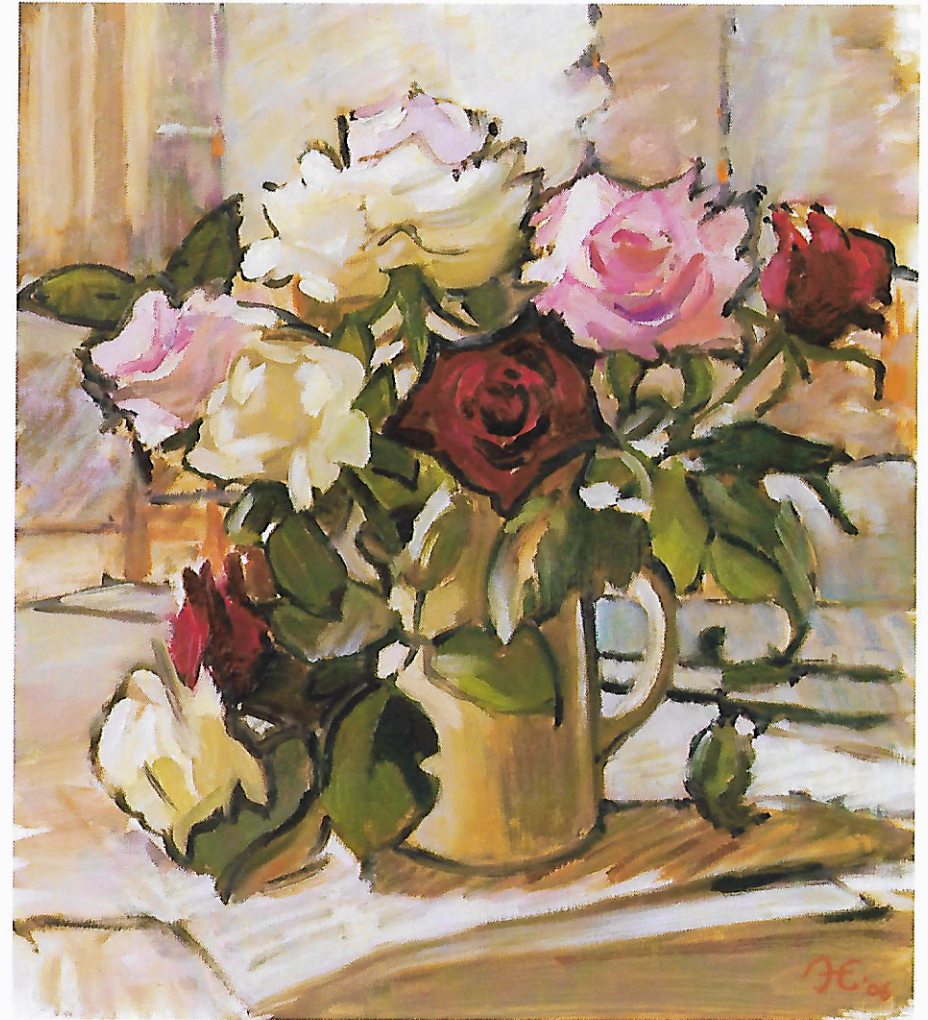
KRISTINA CHARRINGTON

BROADWELL HOUSE, BROADWELL LECHLADE, GLOS. GL7 3QS
 TEL: 01367 860557 FAX: 01367 860474 MOBILE: 07774 193071
 EMAIL: JEWELLERY@KRISTINACHARRINGTON.COM



Colin Baxter Photography.

'Pretty Puffin'



ALISTAIR JOHN ERSKINE B. 1959

Still life with Pink, White and Red Roses
 Oil on board, Signed with initials, dated '06
 4 x 12 inches (36 x 30.5 cm)

The Gallery will be holding the artist's first solo exhibition in October 2010.
 A catalogue will be available by request.

JAMES HARVEY BRITISH ART

15 Langton Street, Chelsea, London SW10 0JL
 E: james@jhba.co.uk | W: jamesharveybritishart.com | T: +44 (0)20 7352 0015



HUNTER

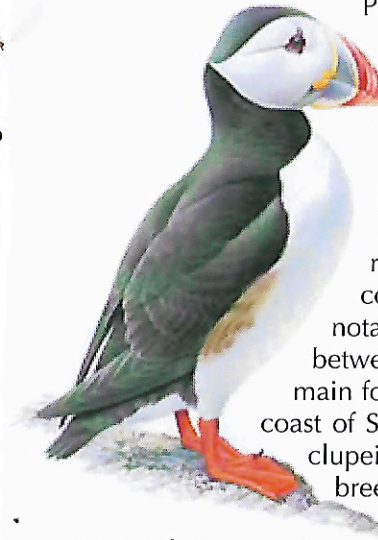
PROUD TO SUPPORT THE NATIONAL TRUST FOR SCOTLAND

RECEIVE A 20% DISCOUNT ON ANY PAIR OF BOOTS OR CLOGS FROM
THE RHS COLLECTION

CALL 0121 240 8672 AND MENTION
THE NTS WOMEN OF ACHIEVEMENT LUNCHEON

Puffin Appeal Project Concept

Dr. Richard Luxmoore
Senior Nature Conservation Advisor for the National Trust for Scotland



Puffin colonies are declining in many parts of Scotland and this is believed to be associated with food availability. On St

Kilda, puffin productivity and the weights of fledging puffins have been very low in recent years with disastrous breeding seasons in 2005 and 2007 (Money, 2008).

Unfortunately our understanding of puffin ecology is hampered by their habit of nesting in burrows and locating the burrows on particularly inaccessible cliffs. Puffin research has therefore concentrated on a small number of colonies where they nest in more accessible locations,

notably the Isle of May in the Firth of Forth, where the link between puffin productivity and the availability of sandeels, their main food, has been demonstrated. Feeding ecology on the west

coast of Scotland is known to be different, a greater proportion of clupeids being taken, and there is a lack of synchronicity between breeding failures on the east and west coasts. Even the size of

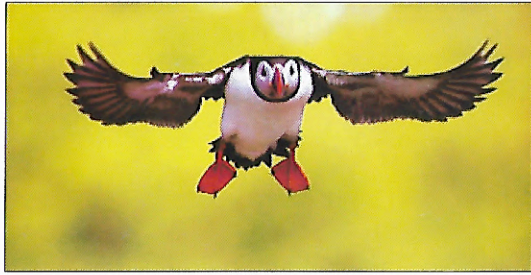
colonies on the west coast is poorly known because they

are mostly inaccessible, and yet it is here that the majority of the Scottish puffin population is to be found.

This project aims to take advantage of a readily accessible, but previously unstudied puffin population on the island of Mingulay (Outer Hebrides) to investigate the feeding ecology of puffins on the west coast and to develop techniques for censusing and observing puffins that can be used in inaccessible locations.

Puffins sit for short periods outside their burrows, particularly at certain times of day and different phases of the breeding season, and this can be recorded remotely with time lapse photography. The use of image recognition systems will enable a greater number of photographs to be analysed and will increase the possible frequency of observations throughout the day. By observing the burrow attendance of puffins in the accessible colony, it is hoped to develop algorithms to allow an estimation of colony size from these photographs. Variations in burrow attendance throughout the breeding cycle may give an indication of the rate and date of any breeding failures and, in the post-hatching period, the frequency of feeding visits may be related to food availability. Techniques developed in this way will be tested on other inaccessible puffin colonies on Mingulay and their applicability assessed on the much larger poorly accessible colony on St Kilda.

Feeding ecology will be assessed, both the number, species and size of fish presented, and this will be compared with data available from other colonies to identify any regional variations.



'Flaps Down - Am I in time for lunch?'

Protecting Puffins Appeal

The Ritz Hotel Raffle

Envelopes will be placed on each table and will be collected during coffee before the speakers begin at 1.45pm. Please write your name on a bank note and place inside. Please give generously and help us to safeguard the future of our Puffins in the UK.

Silent Auction

1. Kinloch- Anderson Silk Tartan and velvet lined shawl.
2. The Linen Merchant Dressing Gown, yellow flowers
3. Susie Pringle Cashmere
4. The Linen Merchant Dressing Gown, multi flowers

The Silent Auction will be set up at the entrance to the dining room. Please write clearly your name and address and telephone number and your bid. If time allows the prizes can be taken at the end of the lunch or they will be delivered/posted shortly afterwards.

There will be a few puffinabilia items for sale at the entrance to the dining room. Fluffy Puffins, talking puffins, pouring puffins, drinking puffins and a few more unusual happy puffins.

Perfect gifts for friends and family alike.

Puffins need your help!



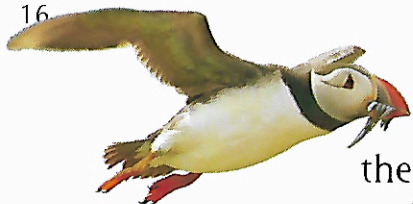
the National Trust
for Scotland

a place for everyone

Timings for Women of Achievement Luncheon

27 April 2010

| | |
|-------|---|
| 11.45 | Arrival Drinks |
| 12.20 | Lunch Announced |
| 1.00 | Lunch |
| 1.35 | Coffee |
| 1.40 | Chairman's Introduction |
| 1.45 | Susan Bain NTS Appeal |
| 1.50 | 1st Speaker Dame Stephanie Shirley |
| 2.00 | 2nd Speaker Katherine Garret-Cox |
| 2.10 | 3rd Speaker Ruby Wax |
| 2.20 | Farewell Thanks |
| | Kate Mavor, Chief Executive of The National Trust for Scotland |



the National Trust
for Scotland
a place for everyone

MENU

Leek and Roquefort Tart
with lemon vinaigrette sauce and green leaves

Roast Cannon of Spring Lamb with Redcurrant Jus
green beans and carrots with roasted new potatoes

Vegetarian Wild Mushroom Stroganoff with Truffled Rice
and green beans

Coffee/Tea with Shortbread and Orkney Tablet.

DRINKS

Pink Fizz

Flagstone Noon Gun Blanc- South Africa
Domaine Tranquillite, Vin de Pays D'Oc -France

Elderflower Cordial



the National Trust
for Scotland
a place for everyone

SPEAKERS

Theme:
The Art of Achievement

The Hon Lady McAlpine
Chairman

Susan Bain
National Trust for Scotland Western Isles Manager

Dame Stephanie Shirley
National Ambassador for Philanthropy

Katherine Garret-Cox
Chief Executive, Alliance Trust PLC

Ruby Wax
Leadership Facilitator, Executive Coach

Kate Mavor
Chief Executive, the National Trust for Scotland





Ruby Wax

Ruby Wax is best known for her T.V. documentaries and interviews. She performed at the Royal Shakespeare Company for 5 years and was script editor for various shows including Absolutely Fabulous. Previously she studied psychology at the University of Berkeley, California and recently she has been studying for an MSc in Psychology and Neuroscience at UCL. Since graduating she has been facilitating leadership groups to improve their communication skills as well as coaching and advising individual executives.

Clients include:

BAe, Orange, The Welsh Assembly, KPMG, Skype, eBay, London Business School, Women in Retail, Deutsche Bank, Goldman Sachs, Microsoft, The Home Office, Johnson and Johnson Pharmaceuticals, Bayer

In 2003 she was appointed at the Chief Investment Officer and Executive Director of Morley Fund Management, the fund management division of Aviva, the UK's largest insurance company, where she was responsible for more than £160bn invested in equities, fixed income, private equity and alternatives.

In 2000, Katherine featured as a member of the Ultimate Investment Club, for Money Magazine alongside Abby Joseph Cohen of Goldman Sachs and Peter Lynch of Fidelity Investments. She is a member of the UK Society of Investment Professionals; CFA Institute. She was nominated a Young Global Leader of the World Economic Forum in October 2005 and since 2006 has served as a Trustee of the Baring Foundation. In 2008 she was appointed to the Board of Fellows of the Thunderbird School of Global Management.

Katherine is married to Jeremy, who works in corporate finance, and they have four young children. She is an accomplished musician, playing the piano, the organ and the flute as well as being a very keen gardener. She lives in Angus, with a dog, two ferrets, a guinea pig, 12 chickens and a herd of highland cows.



Dame Stephanie Shirley

Dame Stephanie Shirley (76) is a successful entrepreneur turned ardent philanthropist.

Having arrived in Britain on a Kindertransport in 1962 she started a woman's IT company (eventually acquired by Steria in 2007). In 25 years as its Chief Executive she developed it into a leading business technology group, pioneering new work practices and changing the position of women along the way.

Since retiring in 1993, she has served on corporate boards but her focus has been increasingly on philanthropy based on her strong belief in business people giving back to society. She is no longer on the Rich List having ceded a quarter of the company to the staff and given over £50m in grants via the charitable Shirley Foundation.

Dame Stephanie's main interests are making better use of IT in the voluntary sector and autism (her autistic son Giles died age 35 in 1998). She has initiated and funded a number of projects that are pioneering by nature and strategic in impact.

Now the (honorary) national Ambassador for Philanthropy she is galvanising philanthropists, philanthropic leaders and organisations to work together and encourage philanthropy. Her freedom and independence is targeted to transform giving not only by changing attitudes and behaviour but also by legal and financial reform.

As Ambassador for Philanthropy she has pledged

to inspire the idea that giving is a pleasurable act of desire and compassion
to help, change or challenge any aspect of society
by raising the bar on our capacity to be generous

2010

Photo by Robert Taylor. www.taylor-photo.co.uk

Katherine Garrett-Cox

Katherine is Chief Executive of Alliance Trust PLC. She joined the Trust as Chief Investment Officer in May 2007 and was appointed Chief Executive in September 2008. She is the youngest and one of four female chief executives in charge of a FTSE 100 company and the Trust has won the Opportunity Now Award for the last 2 years which recognises the number of women on the Board. She is also CEO of Alliance Trust Asset Management and Non-Executive Director of Alliance Trust Savings.



Having graduated from the University of Durham with a degree in History, Katherine joined Hill Samuel Asset Management as a portfolio manager, rising to be Investment Director, Head of American Equities at the age of 26, managing a range of retail and institutional mandates in excess of \$5.5bn. The award winning team successfully beat the average of their fund management peers in both the UK and US for five years running. She took on her first Executive role as Chief Investment Officer and Executive Director of Aberdeen Asset Management PLC in 2000 where she managed both North American and Global Equity products.

List of Guests

A

Mrs MP Aiken
Mrs Alban-Moore

B

Susan Bain
Mrs Baich
Trudie Ballard
Mrs Deborah Banks
Mrs Margaret Barron
Deborah Bennett
Mrs Geertje Boerboom
Mrs AS Bond
Mrs Simon Bonham
Ms Borgeroff Mulder
Mrs Adrian Bowden
Mrs DS Boyle
Viscountess Bridgeman
The Hon Lady Brinkman
Amanda Brock
Ms Bridget Brown
Mrs B Buisseret

C

Mrs Tessa Calver
Carola Lady Campbell
Mrs SG Clark
Mrs EA Clarke
Mrs Christine Clarke
Mrs Jean Clarke
Vivien Clere Green MRSS IPTI MBRCF
Ms Katherine Colquhoun
The Hon Mrs Andrew Colville
Amanda Courtauld
Mrs Duncan Crawford
Miss Elizabeth Crichton Stuart
Lady Crichton Stuart
Mrs Hermione Crossfield OBE

D

Mrs J Dalrymple Hamilton
Mrs Anthony Darlington
Miss Edith Deacy
Miss Christian Dewar Durie
Mrs Belinda Dickson
Mrs Morag Dobbin
Rachael Doerr
Mrs Donnithorne Tait
Mrs GV Drummond OBE DL

E

Lady Edmonstone
Lady Alexandra Etherington

F

Jean Findlay
Mrs JA Flory
Mrs Jitka Fort

G

Mrs Katherine Garret-Cox
Miss EL Garson
Mrs Audrey Giles
Mrs GMR Graham
Mrs JM Grant Peterkin
Patricia Gregory
Mrs Katherine Grimston

H

Karen Harper-Gow
Lucinda Harris
Mrs James Harvey
Mrs Aline Hay
Mrs Francis Hazeel
Mrs Ann Heber-Percy
The Hon Mrs Heber-Percy
Mrs V Hope Henderson
Mrs Horton
Mrs Riognach Hourican
Petronella Humphries

I

Annie Irving Edwards

J

Mrs Eileen Jamison
Ms Caroline Jessel
Mrs PA Johnstone

K

Ms Alison Kellett
Mrs Douglas Kinloch Anderson OBE

List of Guests

R

Mrs Susie Redfern
Lady Reid
Mrs C Reid
The Hon Mrs Clare Renton
Lady Ross

S

Claire Saunders
Mrs David Scholfield
Mrs Peter Scott
Mrs Richard Scott
Mrs Walter Scott
Mrs M Seligman
Dame Stephanie Shirley
Mrs Bunny Slimmon
Mrs Ian Southward
The Hon Mrs Stanley
Mrs Jan Steel
Mrs Allyson Stewart-Allen
Mrs Gary Stoddart

T

Dr Stephanie Templeton
Mrs JM Thornton

V

Baronin M-P von Oppenheim

W

Gillian Waddell
Mrs SJ Wadham
Valentine Walsh
Mrs Janet Wedge
Mrs JM Whitbread
Mrs Robin Willis
Mrs Mark Wilson
Mrs Polly Wood
Mrs Elizabeth Woodland-Griggs
Mrs Barbara Woodthorpe-Brown
Mrs R Wordie
Mrs Sarah Wright
Ruby Wax

L

Mrs Erica Lazarus
Mrs Linn Lee
Caroline Leslie
Mary Leslie
Miss Pamela Leslie-Melville
Ms Sarah Lewis
Ms Sue Liberman
Mrs Duncan Liddell
The Hon Mrs Lopes

M

The Hon Lady McAlpine
The Countess of Macclesfield
Mrs LM Maclean-Bristol
Mrs Duncan McDougall
Mrs D McFadzean
Miss Jane McFadzean
Mrs Jill McGuire
Mrs AJ McNair
Mrs KH Marriot
Mrs Liz Martin
Mrs Marx
Anne Mason Brown
Kate Mavor
Miss June Mendoza AO OBE
Mrs Marcia Milne
Mrs Carol Mitchell
Mrs R Mitchell
Mrs Moody
Mrs Susan Morgan

N

Amanda Nicholson

O

Lady Ogilvy-Wedderburn
Mrs Orr

P

Mrs I Paterson
The Hon Mary Pearson
Mrs Brian Phelps
Rosamund Pilcher
Mrs Simon Pilkington
Mrs SP Potter
Lady Caroline Primrose



the National Trust
for Scotland
a place for everyone

I am so delighted that the Women of Achievement Luncheon is once again supporting our conservation work in Scotland. So much of what we do to protect our heritage is painstaking monitoring work which contributes to our expertise. What we learn on Mingulay will be useful in protecting all our puffin colonies across the country.

The National Trust for Scotland opens its doors this April with a sense of optimism for the future. Last year was a difficult year in which we had to cut back on our activities and make many valued staff redundant. The result of this action, however, has been to awaken our members to the need for change. We have wrestled for some time with the challenge of doing so much good conservation work encompassing both the natural and cultural heritage. It is a huge task and we are finally recognising that we need to do things very differently. We simply cannot afford to do so much with such limited resources.

The difficult decisions of 2009 have bought us time to reflect on our future. Change is very energising, provided it is well thought through and that everyone has a chance to contribute their ideas. One thing which will not change is our vision that everyone should enjoy and embrace Scotland's heritage and place it at the heart of the nation's future. We will continue to protect and promote our heritage.

Over the years we have taken on many activities which do not directly contribute to our core purpose of conservation and we need to take a long hard look at how we focus our funding and our people on what matters most. We plan to work much more in partnership with others so that we can share

activities and free up time for the things we do best. For example, at Arduaine garden in Argyllshire, we have partnered up with the local Loch Melfort Hotel. We are putting on a Spring Garden Festival, with the hotel providing superb catering, accommodation and a venue for talks, with specialist tours of the garden as part of the programme. Local people have formed a support group to raise money for the garden and promote the hotel and garden more widely.

The more that we can develop partnerships with others to support us in making our properties thrive, the more we can concentrate on conserving them. We are looking at each property in turn and working out how better to balance the need to generate income with the need for high quality conservation management.

2010 will be an exciting year with the re-opening of Craigievar, newly repinked after a 2-year project to replace the outer harling. We are celebrating the 50th anniversary of the world-renowned Little Houses Improvement Scheme – 50 years of vigorous NTS activity in the purchase, restoration and re-selling of historic buildings as homes. Over 150 "small houses of character" have been saved using our innovative "revolving fund". Our new Head of Gardens and Designed Landscapes has a new programme of talks, master classes and workshops and our countryside team have come up with lots of ideas to promote better to our membership the wonderful landscapes we manage as Scotland's third largest landowner.

Thank you all once again for your support and I hope to see you in Scotland in 2010.

Kate Mavor
Chief Executive

Kate Mavor is Chief Executive of the National Trust for Scotland. She was previously Chief Executive of ProjectScotland, the national youth volunteering charity, and Language Line, the UK's community interpreting service. Kate began her career in book publishing and education after graduating from Oxford University. She is originally from Glasgow and now lives in Edinburgh.



Kate Mavor



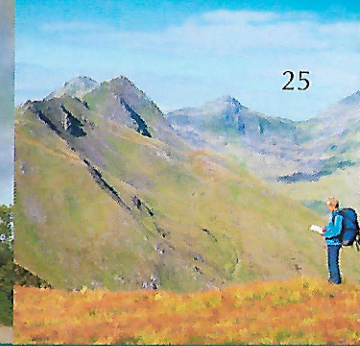
BY APPOINTMENT TO
HER MAJESTY THE QUEEN
AND HER MAJESTY THE PRINCESS
OF WALES
A BARBOUR BRAND LTD.
83070 WIRELD

BY APPOINTMENT TO
HIS ROYAL HIGHNESS THE DUKE
OF CAMBRIDGE
AND HIS WIFE THE DUCHESS
OF CAMBRIDGE
A BARBOUR BRAND LTD.
83070 WIRELD

BY APPOINTMENT TO
HIS ROYAL HIGHNESS THE DUKE
OF YORK
AND HIS WIFE THE DUCHESS
OF YORK
A BARBOUR BRAND LTD.
83070 WIRELD

Barbour

T: 0800 009988 | www.barbour.com



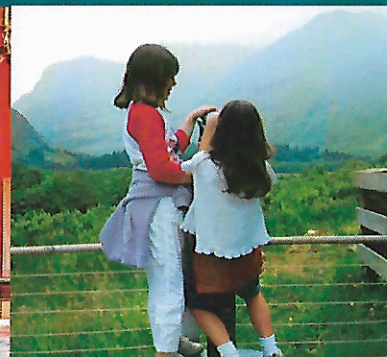
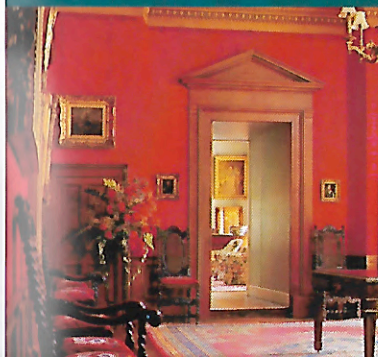
Membership - the gift that lasts a whole year

visit: www.nts.org.uk
or call: 0844 493 2100



the National Trust
for Scotland
a place for everyone

The National Trust for Scotland for Places of Historic Interest or Natural Beauty is a charity registered in Scotland, Charity Number SC 007410





Neston Park Farm Shop

The very best local and organic foods



- * Newly extended cafe with an exciting new menu using local produce
- * Organically reared meat from the Neston Park Estate at the butchery

* Neston Park Farm Shop Meat Boxes delivered to your door

For more details or brochure please call 01225 700 881

- * Finest deli with variety of local and organic cheeses, meats and antipasti

* Wide selection of artisan breads readily available.

Free nature trails, plants and animals for children

Open Monday to Saturday 9am-5:30pm, Sunday 10am-4pm

For more information contact Neston Park Farm Shop on 01225 700881

Neston Park Farm Shop Ltd, Bath Rd, Atworth SN12 8HP

www.nestonparkfarmshop.com

We also have a shop in Bradford on Avon - The Cheese Board, 30a Silver Street 01225 868043



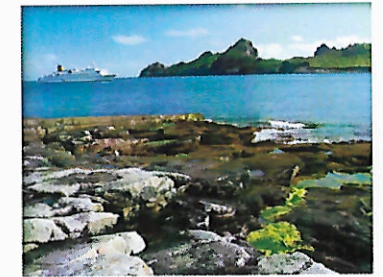
the National Trust
for Scotland
a place for everyone

Our 2011 Cultural Cruising brochures are now available. Request your copy today to read all about our brand new destinations, favourite haunts and remote locations we will be visiting. Our cruises aboard the stylish and friendly *Spirit of Adventure* are well known for their informative programme of talks from eminent speakers and the professional series of concerts from some of Scotland's best-loved traditional and classical artists. All profits from the cruises contribute to the National Trust for Scotland's vital conservation work.

Island Archaeology

24 to 31 May 2011

An exploration of the rich archaeology and abundant wildlife of Scotland's remote islands



Leaving from Greenock and returning to Leith, this cruise takes us to the Isle of Eigg and St Kilda archipelago, then up to Shetland to visit Lerwick and the tiny island of Foula, and on to Orkney where we call at Kirkwall and the island of Rousay.

**'5% Early Booking discount is available
for all bookings made by the 1 November 2010'**

For a full cruise brochure, please email cruises@nts.org.uk
or telephone **0844 493 2457** (+44 131 243 9334 from outside the UK)
www.culturalcruising.com



End of the day!

DUSKY MOON®
Dream Tubes®
THE COSY BED GUARD

Dream Tubes is a high quality and easy to use bed guard that provides little ones with a safe and secure night's sleep.



Two long sturdy inflatable tubes fit snugly into the pockets of the specially designed soft 100% cotton sheet making a cosy barrier to stop a child falling out of bed. Dream Tubes is compact and lightweight, perfect for regular home use as well as holidays and overnight stays away.

This innovative product ticks all the boxes for safety, comfort, practicality and peace of mind.

www.duskymoon.com

Tel: 01225 811490



Women of Achievement Luncheon

We are extremely grateful to the Ritz Hotel, Kinloch Anderson Scotland, The Linen Merchant, all the following businesses who have taken advertising in this programme and in particular Alliance Trust PLC. We would like to thank them all for their support.

'We would also like to thank Laurie Campbell and Martin Guppy for their wonderful photographs of Puffins for Island Blue, Tobermory Mull.'

Index of Advertisers

| | Page | | Page |
|--------------------------|--------------|-----------------------|------|
| Lyon and Turnbull | Inside cover | Hunter Boot Ltd | 12 |
| Alliance Trust | 2 | J Barbour & Sons Ltd | 24 |
| Caledoniart Ltd | 6 | NTS Membership | 25 |
| Kristina Charrington | 10 | Dusky Moon | 26 |
| James Harvey British Art | 11 | Neston Park Farm Shop | 26 |
| | | Cultural Cruise | 27 |

The Puffin Appeal 2010



We do need your help...



the National Trust
for Scotland

a place for everyone

The National Trust for Scotland London Office

Events 2010/11

9 June - Annual Summer Drinks Reception

at Dover House Whitehall, London.

7pm - 9.45pm

Guests will have an uninterrupted view of Horse Guards Parade where

'BEATING RETREAT' takes place at 9pm.

Tickets £35.00 per person.

24 September - Clay Pigeon Shoot

at CE Churchill Grounds High Wycombe.

Chosen Best Shooting Ground/Club in the UK

Teams of 4 Guns. Entry £800 per team, to include gun hire, instruction, all cartridges, 10-12 Stands, Breakfast and three course Luncheon with wines.

21 January 2011 - Annual Reels Dance

at The Porchester Hall.

Dinner and Reeling to 'The Infamous Grouse' band.

7pm - 12.30am.

27 January 2011 - NTS Burns Supper

at the Caledonian Club

For details of all our events please contact
Carol Mitchell, London Executive.

Tel/Fax 01799 584167

Mobile: 07831 472939

E-mail: camitchell@nts.org.uk

Artist Ann Gardner D.A.



ANN GARDNER
©99